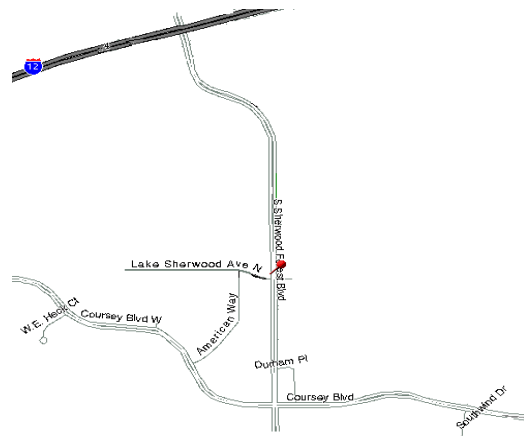




**The Celtic Group, L.L.C.**  
 3888 S. Sherwood Forest Blvd  
 Celtic Centre, Bldg. I  
 Baton Rouge, LA 70816  
 Phone: 225-752-2490  
 Fax: 225-752-2582



**Celtic Marine Corporation**

Baton Rouge, LA (225) 752-2490 \* New Orleans, LA (504) 309-5714 \* Chicago, IL (773) 774-2569 \* New York, NY (914) 243-4626  
 Louisville, KY (502) 891-4494 \* Houston, TX (713) 784-9366 \* Mexico (52) 81-8401-9714 \* Brazil (55) 11-9270-0778

**Celtic International Shipping Agency**

Baton Rouge, LA (225) 368-0980 \* Houston, TX (281) 667-8227 \* Mobile, AL (334) 694-7001

**Celtic Media Centre** (225) 330-6000 \* **Celtic Commercial Services** (225) 751-8535

**Celtic Financial** (225) 752-2492 \* **Celtic & Stone Liquid Consulting, LLC** (281) 333-9030

**The Celtic Centre**

The Celtic Centre has grown. **Building III** is 6000 square feet and houses Sharp Dooley LLC and SRS Wealth Management in this one story office building next to Starbucks Coffee and facing North Lake Sherwood.

The recently finished **Building VI** houses Prudential Gardner Realtors.

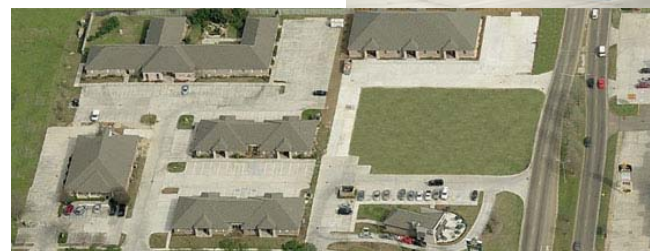
**Building I** houses The Celtic Group which consists of Celtic Management, Celtic Marine, Celtic International Shipping, Celtic Financial and Celtic Commercial Services.

**Building II** is shared by Jerrold A Black CPA and Alliance Security Systems.

Starbucks Coffee (**Building IV**) is on the corner of S. Sherwood

Forest Blvd and N. Lake Sherwood.

**Building V** is planned for Celtic Centre and will be available for long term lease to commercial businesses.



**The Celtic Mariner**

Volume I, Issue IV

January 2008



**The Celtic Group – 2007 Year In Review**

[www.celticgroup.com](http://www.celticgroup.com)

In 2007 the group opened it's newest venture, a full service sound/film stage complex called Celtic Media Centre. While there are many more buildings in the works the O'Connor Bldg. and Oak Tree Bldg. are now operational and housing many tenants. (pg.3) In another exciting development one of it's operating companies, Celtic Marine Corporation, expanded it's operations to Sao Paulo, Brazil joining to it's team Frans Zwanenburg who will help to deliver it's services throughout Latin America and the world. (pg. 2)

Always conscious of it's philanthropic roll and appreciation to the community The Celtic Group has continued it's support of the United Way and Mary Bird Perkins Cancer Center. Celtic Marine Corporation also sponsored it's first ever blood drive on November 9, 2007 at Our Lady of the Lake Regional Medical Center.

We at The Celtic Group are very optimistic about 2008 and beyond. If you are interested in any of our services or just want an update about how things are going you can visit our website or call 225-752-2490.

Frans is one of many new faces who have joined the group over the past year or so. They include Miriam Bennett, Cathleen Knight, Lisa Evans and Josie Guste who joined our truck and rail division. Dan Yeager and James Schayot joined Celtic International. We welcomed Patti Kindl to sales and marketing, Scott Minnett to our barge department and Kevin Murphy and Stephanie Honore to Celtic Media Centre. Jessy Akins joined Information/Communication Systems and in the cargo surveying department we welcomed back Rob Marcum and wished farewell to Al Cutno who retired from Celtic Marine after 15 years of dedicated service.



left to right: Michael O'Connor, Brendan F. O'Connor and Bob Bayham, Jr.

Reflective of it's rapid growth and diversity plans are underway to revamp some of our marketing tools including our suite of websites interconnected with the web portal of [celticgroup.com](http://celticgroup.com) which will be launched February 10th. New marketing packets and presentations will also be created using a consistent design concept. We also had a new marketing display created so be sure to check it out next time you see "The Celtic Group" at a conference.

The Celtic Centre, the location of our corporate headquarters, continues to grow with new developments in the works which will increase it's presence at the corner of South Sherwood Forest and Lake Sherwood in Baton Rouge. (pg. 4)



Al Cutno

Inside this issue	
CMC	2
CMC-Brazil	2
Celtic International	3
Celtic Media Centre	3
Celtic Centre	4

## Celtic Marine Corporation

Today, as Celtic celebrates our 22nd anniversary, we are a full-service, third party logistics provider. Owned and operated by the O'Connor family, with our corporate office in Baton Rouge, LA and satellite offices in New Orleans, New York, Chicago, Houston, Louisville, Monterrey, MX and Sao Paulo, Brazil, Celtic Marine Corporation provides the highest quality of services in the transportation industry.

Celtic Marine offers ocean vessel chartering, contract and spot stevedoring services, cargo supervision, contract and spot barge freight, terminal services throughout the Inland Waterways system, truck freight and consulting work. Our staff of highly skilled, experienced, and motivated professionals allows Celtic to manage millions of tons of cargo annually, ranging from all types of steel products, ferro alloys, minerals, limestone, carbon products, fertilizer, cement, salt, iron substitutes units, metals, and all bulk and breakbulk commodities moved via the Inland Waterway system. Also, we move containerized, and project cargo. Celtic offers all modes of transportation as part of a full package service, or individually, as required by our

hundreds of spot and annual customers.

The Truck and Rail Division, formed in June 1997 as a licensed, bonded division offers competitive truck and rail rates to all of North and South America and Canada. Our services include bulk, break-bulk, packaged and containerized cargo. We offer service for Special Project Cargoes and specialized hauling, arranging a full turn-key package to transport big volume cargoes from origin to final destination, as well as, oversized or overweight material that require permits and special trailers.



## Celtic Marine expands to South America

As part of its worldwide expansion, and its strong commitment to the South American market, Celtic Marine Corporation is pleased to announce the opening of its office in Sao Paulo. The Celtic team is joined by Frans Zwanenburg who brings tremendous knowledge and experience of the Brazilian and international shipping markets.

In addition, CMC in Brazil will be reinforced by the incorporation of ASB Logistics Ltda in order to offer, through their worldwide agency network, logistical solutions and on a global basis for break-bulk, FCL, LCL and Air shipments.

We are confident that all our friends and clients will appreciate the added level of service that CMC in Brazil will now be able to offer to the market through the expansion of our services around Latin America, and the World.

### Contact Details:

Celtic Marine Corporation  
Sao Paulo, Brazil Office  
Av. Ibirapuera, 2064 suites 111-112  
Moema - São Paulo - SP  
CEP 04028-001  
Frans Zwanenburg - General Manager

Phone: (55 11) 5051 7767  
Fax: (55 11) 5054 1402  
mob: (55 11) 9270 0778  
fzwanenburg@celticmarine.com  
fzwanenburg@celticmarine.br.com  
General email: cmc-brazil@celticmarine.com



## Celtic International Shipping Agency

The Maritime industry is privileged to information that most people are not aware of. Some prime examples of this are that the world food costs are doubling and tripling (cereals, meats, etc...) And the cost for raw materials is doing the same due to market demand and transportation costs. These issues will affect everyone you know and are worthwhile topics of discussion both at home and in the marketplace.

Freight hire is at record highs which means the Agency becomes even more important to the overall scheme of things. With the cost of vessel expenses being so high, every minute counts. Owner/Charters are acutely aware of any delays incurred in port. Further, along with more stringent government regulations, it has become even more important that the agent be competent and service-orientated - something CISA prides itself in.

### Pascagoula Expansions Planned

We have applied for, and anticipate receiving, our business license for the Port of Pascagoula. Chevron is the biggest business in this area and we are anxious to start handling tankers there, along with any other business we may be able to pick up along the way.

We are going to welcome Jeroen Hijman with LBH Marketing into our office. He will market the U.S. for the whole group. He is a young man with operational experience and the drive to succeed. This will help develop the vast U.S. market as far as Agency.

Mr. James Schayot has joined our Agency. James is young and energetic - something we hope will serve us well for years to come.

Seems our proactive approach on the TWIC program which started here November is paying off. We understand that one cannot get an appointment now until mid February 2008. For those still trying to apply or those who must pick up their TWIC cards, the Baton Rouge office opens at 0630. We understand the best time to get it done is between 0630-0800 hrs.

The Celtic International Agency group would like to wish everyone a happy, healthy and prosperous 2008.



## Celtic Media Centre

Celtic Media Centre is the newest venture of The Celtic Group. Celtic Media Centre is Louisiana's first and only full service studio/sound stage complex built from the ground up and managed to meet the exacting requirements and standards of the international motion picture production industry.

Celtic Media Centre has partnered with Raleigh Studios ([www.raleighstudios.com](http://www.raleighstudios.com)) to manage the facility. Raleigh brings in over 30 years of experience as the nation's largest independent production studio.

Celtic Media Centre is located on a 20-acre site near Airline Highway and Interstate 12 in Baton Rouge. Built around the 35,000 square foot O'Connor Building, which houses administrative offices, post-production, and sound stages 1 & 2, the facility is capable of providing services and supporting personnel in the production of motion pictures, television shows, music videos and video games. The 29,000 sq ft Shannon Building, housing Stage 8, recently completed construction. Phase Two involves three additional buildings, Caitlin, Brianna, and Rebecca, which will house stages 3-7, additional production support offices and warehouse space on-site.

Services offered by the Media Centre include:

- 140,000 sq. ft. of sound stages
- Professional post-production editorial and sound facilities
- Motion capture and green screen for special effects and video games
- Professional grip and lighting services available
- Production offices, mill shop, props, wardrobe, security and other key services and facilities

Contact Details:

Celtic Media Centre  
10000 Celtic Drive  
Baton Rouge LA 70809  
Phone: (225) 330-6000  
888-49-MOVIE (888-496-6843)  
Fax: (225) 330-6163  
<http://www.thecelticmediacentre.com>  
[info@thecelticmediacentre.com](mailto:info@thecelticmediacentre.com)

